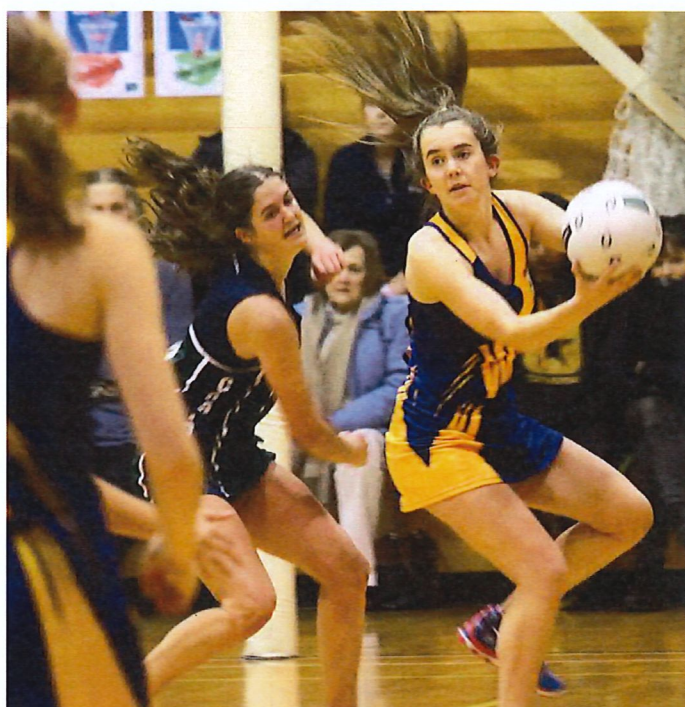


RONCALLI COLLEGE

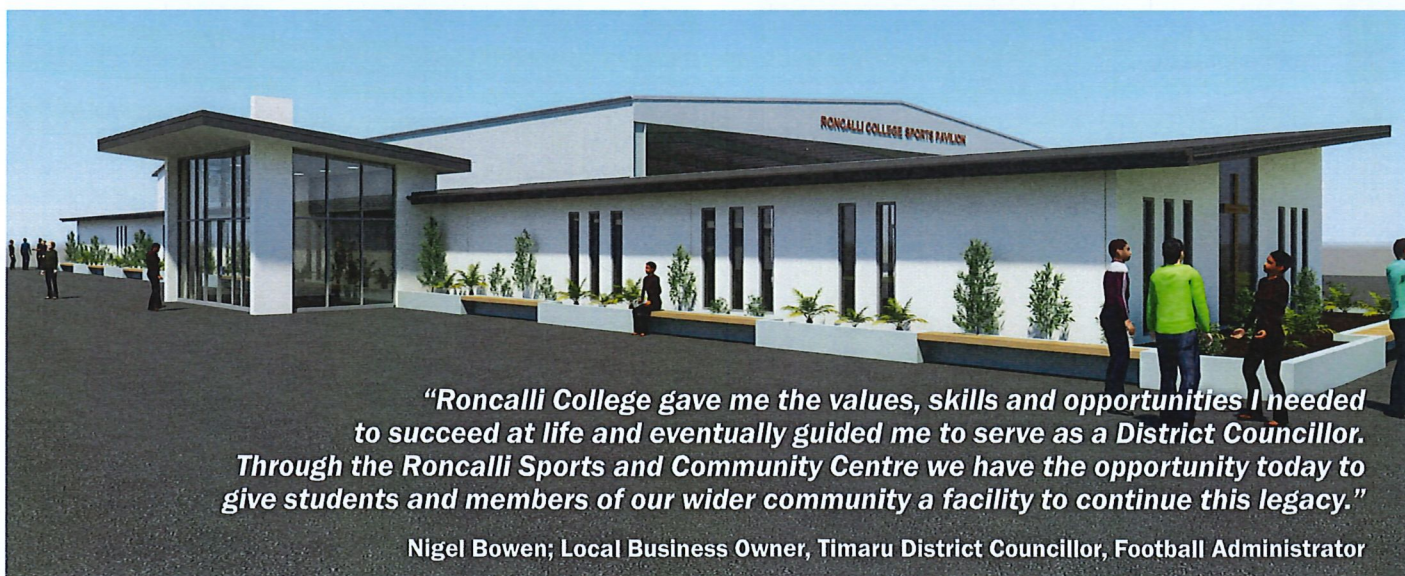


TO SEEK TRUTH AND PEACE

# Roncalli Sports and Community Centre



**Better Health  
Better Futures  
Better Community**



*"Roncalli College gave me the values, skills and opportunities I needed to succeed at life and eventually guided me to serve as a District Councillor. Through the Roncalli Sports and Community Centre we have the opportunity today to give students and members of our wider community a facility to continue this legacy."*

Nigel Bowen; Local Business Owner, Timaru District Councillor, Football Administrator



## Building A Better Future for our Youth and our Community: *The Roncalli Sports and Community Centre*

Our children are our future. As parents, caregivers and educators, we strive to give the students of Roncalli College the education, opportunities and experiences that will best prepare them for the future, a future that sees them involved in strengthening their community through service. Guided by our faith, we will empower and encourage our students to achieve success and make a difference in the world.



Roncalli College is more than a just a school – it is a centre of personal excellence for learning, culture, spirituality and sport. However, our facilities are no longer sufficient to deliver the level of educational and personal excellence that the potential of our students deserve.

Today, I ask you to commit to our vision of a College that will support the best in our students and enable them to fulfil their academic, cultural, spiritual and physical potential.

Your investment in the Roncalli Sports and Community Centre is not just an investment in our school; it is an investment in our students, our future and our community.

I invite you to join with us in realising this vision to build a facility for us all.

With thanks,

Chris Comeau  
Principal

## Our Need

***“As a rower, basketballer, rugby and hockey player, Roncalli College creates a culture that supports me to do my best. This facility would provide us with the training surface to give us that edge to make us even better.”***

Thomas Flynn;  
South Canterbury Under 18 Hockey team, Year 11 Student

Since 1982, Roncalli College has prepared our students for a meaningful life beyond our school gates. Within the walls of our school buildings, we inspire our young people with the values and attitudes to serve others, equipping them with the knowledge and skills they need to succeed.

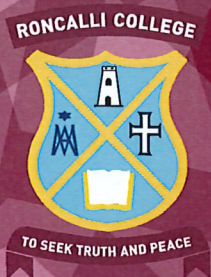


Our campus lacks critical infrastructure necessary to give students the complete educational experience they deserve. Currently there is limited space large enough to gather the different groups of the College student body or welcome families, friends, and members of the parish and community. We struggle to achieve our goal to engage and support community members, be it our contributing schools, other high schools, members of the parish or wider community groups due to a lack of meeting spaces. During the cold autumn and winter months there is no protected outdoor area where students can congregate. There is a growing need for additional space for our sports and physical education (PE) activities, as our gymnasium can no longer accommodate the large number of PE classes and sporting opportunities we provide. Nearly all of our students play organised sport at the College, forging relationships both inside and outside the College, with most of our students playing two or three different sporting codes. A practice and playing surface is needed that allows for these numbers and mitigates the disruption of the South Canterbury winter.

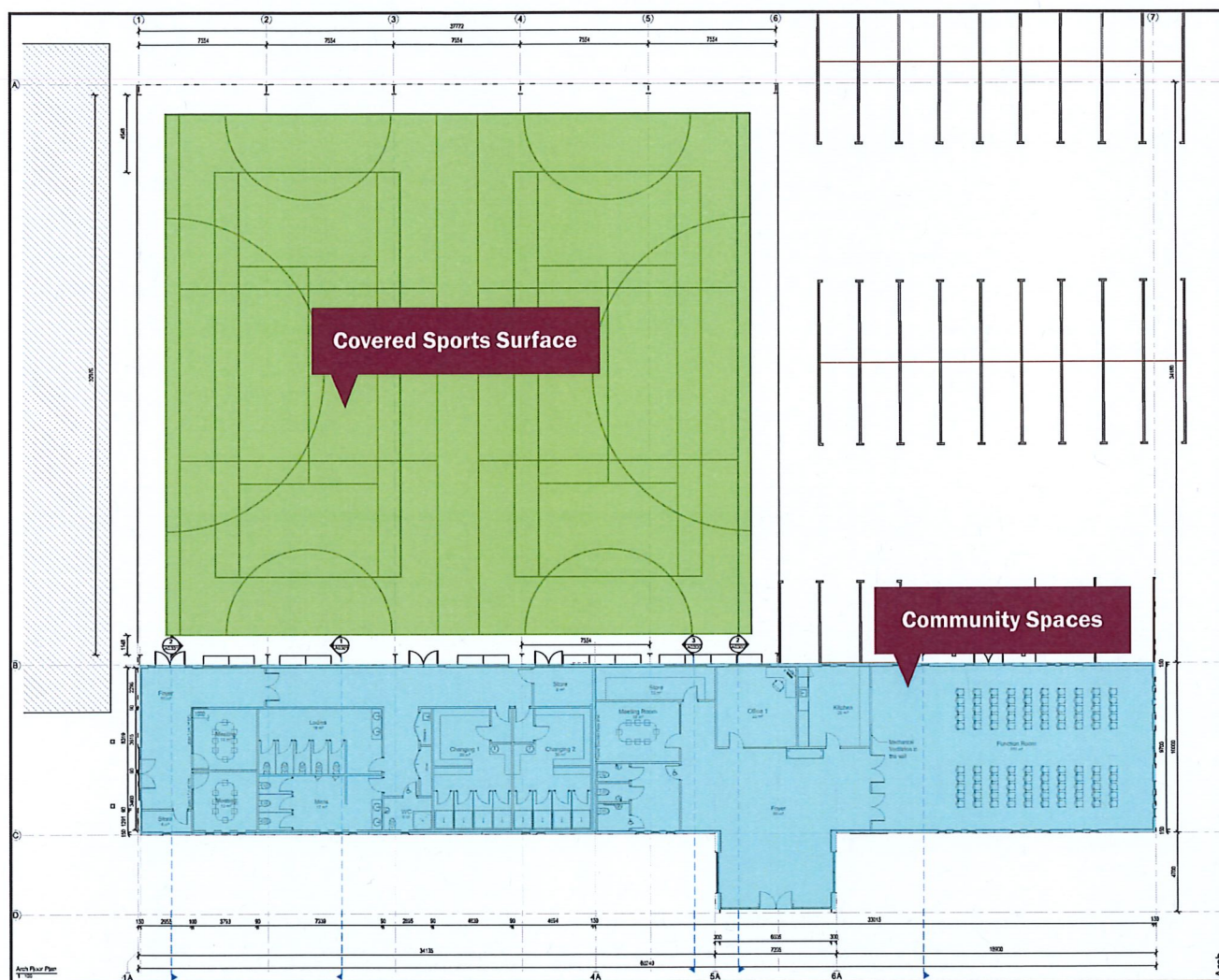
***“Playing netball at Roncalli College set me on the right path to become an elite netballer. It is incredibly important that the Sports Centre be built, for future generations of athletes to continue on this path.”***

Laura Dorgan; Mainland Boko Netball Team,  
NZ Secondary Schools Netball Trialist





# Roncalli Sports and Community Centre



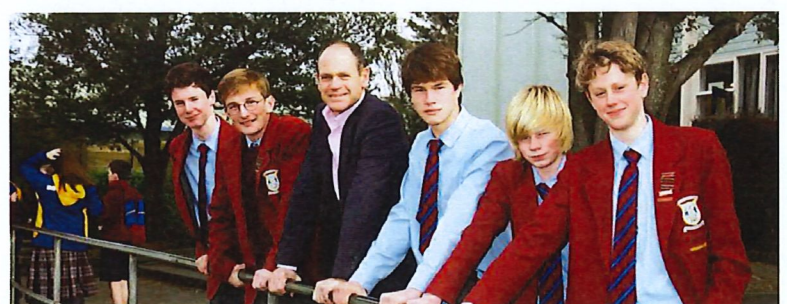
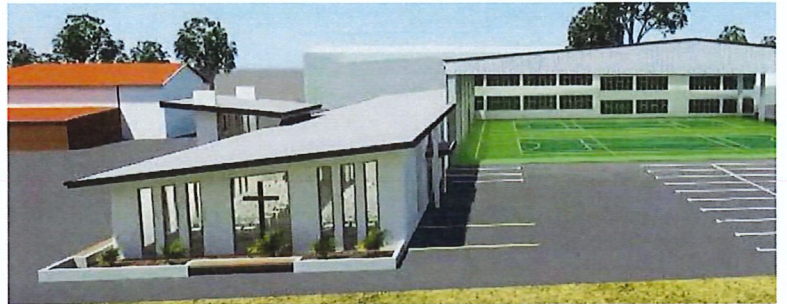
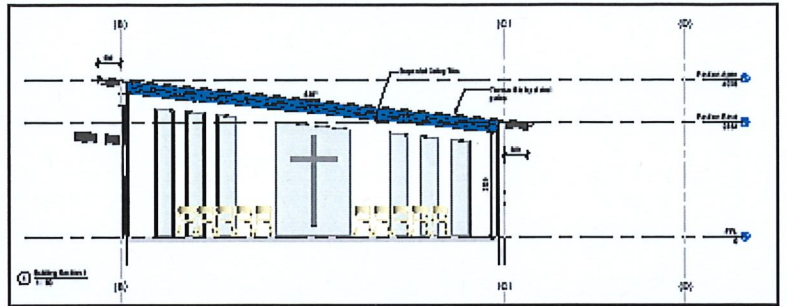
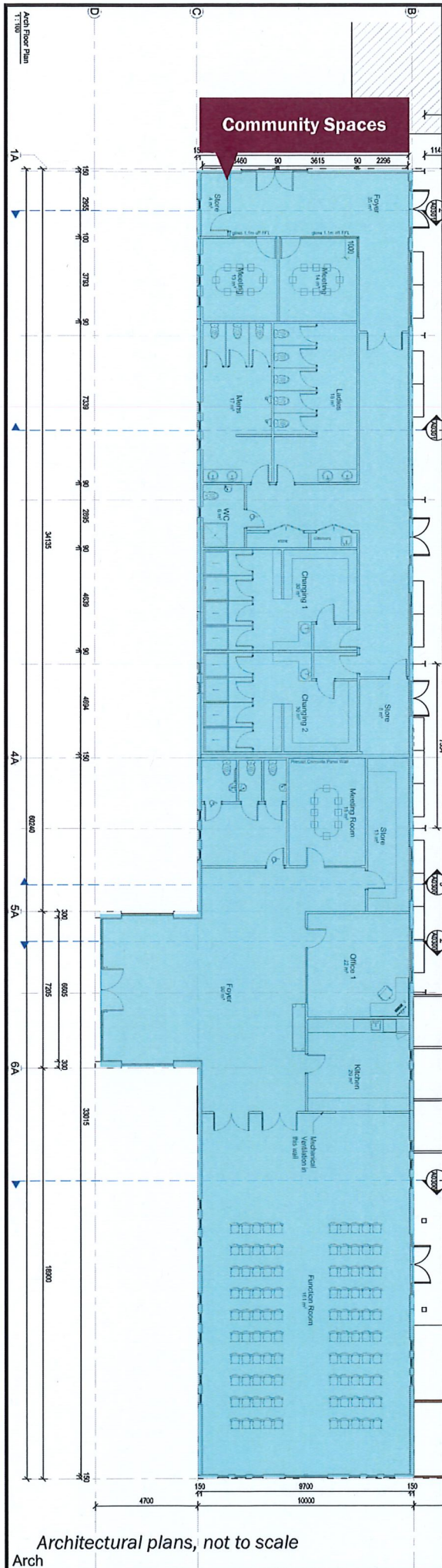
Architectural plans, not to scale

**“Roncalli College has a great tradition of offering sporting opportunities to ALL students. As schools face the challenge of continuing to engage young people in sport, a complex such as that proposed will facilitate the process and enhance these opportunities. I commend the school and the parish community on their proposed combined facility. This is a very positive step forward.”**

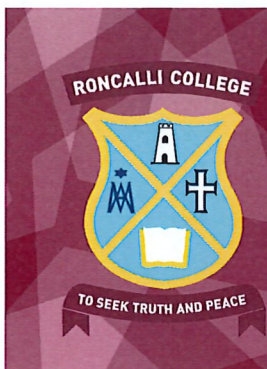
Gerry Fennessy;  
Former Teacher and Deputy Principal of Roncalli College











# Roncalli

## Sports and Community Centre

### Building a Stronger, Healthier Future for Our Youth

Education is a ministry very close to my heart. I recognize the critical importance of the ongoing education and formation of youth, and have been blessed with wonderful opportunities as a teacher to personally engage in this essential and rewarding work.

Today, Roncalli College, the Timaru community, and South Canterbury region also face a tremendous and joyful opportunity – building a stronger, healthier future for the students of Roncalli.

Roncalli College is embarking on the construction of a state-of-the-art sports and community centre, to better support our young people as they come to know God and find their purpose in life. Sports and physical education are important to the development of all students. This facility will improve the physical and mental health of Roncalli College's youth.

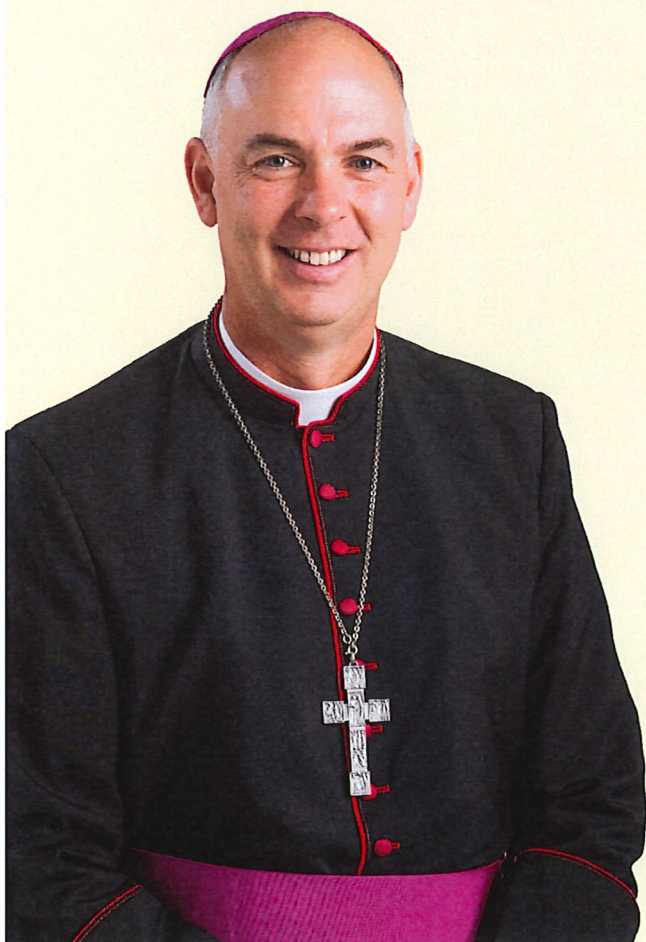
The cornerstones of our spirituality are education and faith. Together, through our shared commitment to the community and to the Church, we can construct new spaces to better serve our students and parishioners as they strive to live Eucharistic lives.

The name Timaru is said to derive from Maori words meaning 'a place of shelter'. Our task today is to strengthen the shelter for our students in this community.

I invite you to join us as we journey together towards a transformed school, and encourage you to make a gift to help build the Roncalli College Sports Centre.

With gratitude,

+ Paul Martin, SM  
Bishop of Christchurch







# Roncalli Sports and Community Centre

**Support for a Better Community**



# Roncalli Sports and Community Centre

**Support for a Better Community**



## Netball South Canterbury Inc

PO Box 718 Timaru 7940. Telephone: 686 0187 Fax: 686 0428  
Email: netball.exec@xtra.co.nz Website: www.netballsouthcanterbury.co.nz

24 July 2018

To Whom It May Concern

Re: Roncalli College Sports and Community Centre - Ashby Courts

I am writing on behalf of Netball South Canterbury in support of the proposed Roncalli College Sports and Community Centre.

This complex will be beneficial and an asset not only to the Roncalli College community but also to the wider South Canterbury sporting community.

Weekend time has become precious to people and the growing attraction of mid-week play has become apparent within our netball community. Players are longing for the opportunity to play their netball in an inside venue and away from clashes with both work and other family sporting commitments.

It will be an asset to the district and we wish Roncalli well with the project.

Yours sincerely

Karen Naylor  
President



**Save the Children®**

President: Marie O'Driscoll,  
email: mbod@xtra.co.nz  
contact: 027 777 9993; 03 6881577

25 July 2018

### TO WHOM IT MAY CONCERN

The Save the Children Foundation fully supports Roncalli College with their construction of a multi use community centre.

We look forward to being able to have access to modern meeting facilities to help out with our charitable work.

Yours sincerely

M O'Driscoll  
President, South Canterbury Branch





Artist's Impression of the Roncalli Sports and Community Centre

## Our Vision

***"When I attended Roncalli College, it was back in the days when it was called St. Patrick's High School. On reflection, we had rather basic resources then. While the current College has flourished and already possesses some outstanding facilities, it is time for the students to get a state-of-the-art Sports Centre. They deserve it."***

**John McBeth; MNZM, Sports Commentator**

Our vision is to transform the Roncalli College campus by constructing the Roncalli Sports and Community Centre, a state-of-the-art sports and community facility that will enhance student experience and provide countless opportunities for personal development and growth.

Our aim is to build an integrated, multifunctional centre that reflects the spirit of community and excellence that Roncalli College represents and that meets our students' and community's needs for shared spaces and sports facilities, therefore creating an inspirational campus that reinvests in the community and supports sustained, holistic learning for future generations.

The Roncalli Sports and Community Centre will comprise:

- ▶ Large and small meeting spaces for gatherings of students, College groups, cultural activities and community groups. These spaces will help forge stronger ties within the community, and provide essential, multipurpose spaces for community activities and sports that will adapt to the evolving needs of the Timaru community.
- ▶ An all-weather covered turf facility marked for a variety of sports and physical education activities. This facility will enhance the physical wellbeing and education of our students and support a range of sporting codes within the community. Modern changing facilities will support a range of sports. The Centre will allow students to assemble outside and remain active, still sheltered from the elements.

***"Roncalli College is a school that encourages all students to get involved in as much as we can and from this we make great friendships. As an aspiring Football Fern, this development would enable Roncalli footballers to train all year round and enjoy the fun of being together whilst striving to be our best."***

**Ruby Anderson;**  
New Zealand U17 Football Talent ID Squad, Year 11 student

## Our Request

***"My siblings and children attended Roncalli College. I support the Roncalli Sports and Community Centre as it's a wonderful opportunity and I understand the importance of a multi-faceted education. I believe in investing in this incredible school that has educated so many in our community."***

**John Simpson;**  
Local Business Owner, South Canterbury Rugby coach

Roncalli College is committed to raising \$1.5 million in order to transform our vision of our Centre into reality.

Our funding goal, combined with existing commitments from the parish and community, will enable the total construction project to move forward at an estimated cost of \$2.5 million.

The students, families, and alumni of Roncalli College are connected by our shared school experience. Guided by our belief in the importance of a holistic education and building upon our faith and community, today we can make a tremendous difference in the lives of our young people.

You are now invited to demonstrate your commitment to our students and our school. This is our opportunity to build a better future for our children.

***"This facility will help bring together our school and our parish, and is something that the entire Timaru community deserves."***

**Gary Shand;**  
Chair, Sacred Heart Basilica Fundraising Committee







## Contact Us



Chris Comeau

Co-Chair, Roncalli Sports and Community Centre  
Fundraising Committee

Principal, Roncalli College

[c.comeau@roncalli.school.nz](mailto:c.comeau@roncalli.school.nz)

+64 3 688 6003



Kelly O'Driscoll

Co-Chair, Roncalli Sports and Community Centre  
Fundraising Committee

Trustee, Roncalli College

[kelly@plunket-electrical.co.nz](mailto:kelly@plunket-electrical.co.nz)

+64 27 233 4334

### Roncalli Sports and Community Centre Fundraising Committee

Catherine Kelly	<a href="mailto:c.kelly@roncalli.school.nz">c.kelly@roncalli.school.nz</a>	+64 3 688 6003
Andrew Jones	<a href="mailto:a.jones@roncalli.school.nz">a.jones@roncalli.school.nz</a>	+64 27 201 1287
Tracey Talbot	<a href="mailto:gard.talbot@hotmail.com">gard.talbot@hotmail.com</a>	+64 27 490 8724
Stacey Scott	<a href="mailto:stacey@scottandassociates.co.nz">stacey@scottandassociates.co.nz</a>	+64 21 688 588
Nigel Davenport	<a href="mailto:nigel@aorakidevelopment.co.nz">nigel@aorakidevelopment.co.nz</a>	+64 21 792 770

[www.roncalli.school.nz](http://www.roncalli.school.nz)



catholic diocese  
of christchurch

to sanctify - to teach - to care for