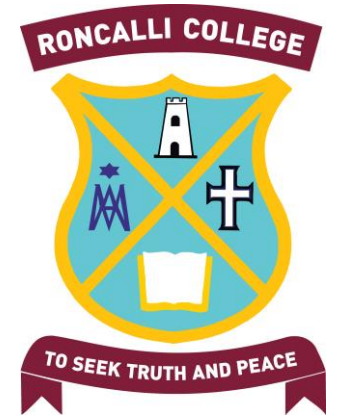


Ashby Courts Redevelopment Project



Background

February 2014

After looking at comparable schools, the Finance and Property Committee wanted to look at a strategic approach to property development.

We needed to find out what the community valued and wanted.

Community consultation

March 2014

Online surveys distributed to staff, students and other members of the community and after one month results were collected.



Results



- The following trends came from the stakeholders:
 - Need for a large meeting space for gatherings of up to 150 people
 - Need for a small, inviting and private meeting space for groups of 10-20 people
 - Desire for a performance space for cultural activities
 - Need for more toilets in the College
 - Need for a large space that could cater for the large number of PE classes
 - Need for a greater number of changing facilities
 - Need for covered area for students in the autumn and winter months



The Concept

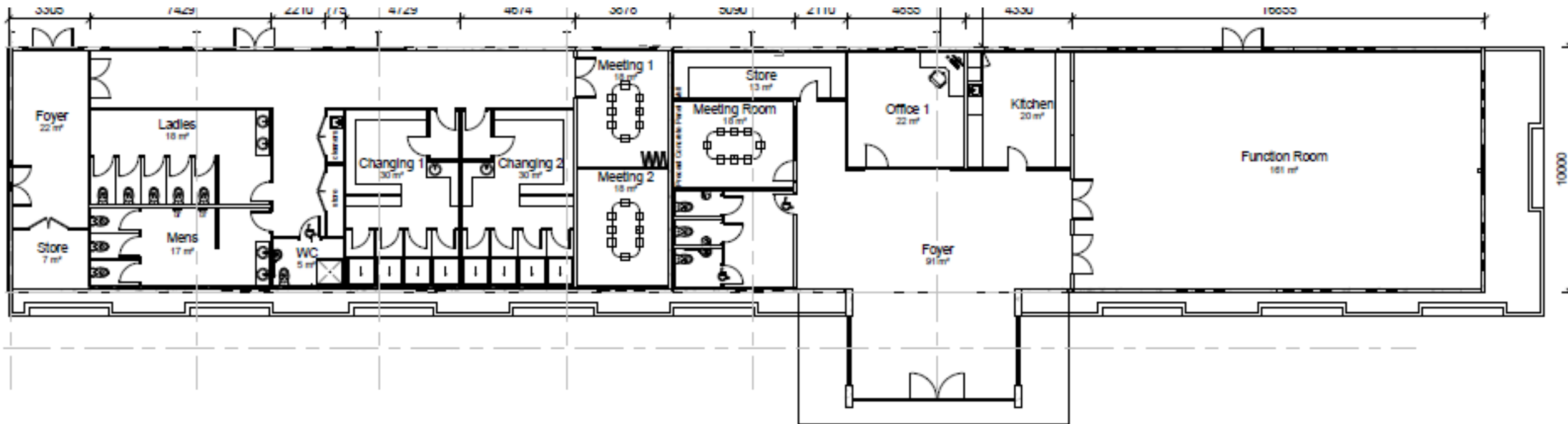
- A multifunctional facility that can be used by a wide range of community groups in Timaru, especially those connected with the Parish
- A joint venue that brings together the Catholic schools and Parish in a united project
- A facility that encourages different groups to mingle together and interact
- Achieves strategic goals of the College to develop closer links to the Parish
- Addresses needs and wants of our community













SPORTS PAVILION

CHANGING ROOMS



 **THOMPSON**
CONSTRUCTION - ENGINEERING - PRECAST

THOMPSON

CONSTRUCTION - ENGINEERING - PRECAST

RONCALLI COLLEGE





What next?

- A vote is to take place at the Masses scheduled on the 29 and 30 of April.
- Voting will take place to decide between a concept that is solely for use of the Parish OR the College's proposal for a multi purpose community facility.
- Voting papers can be requested and submitted by the following Monday.



This concept will:

- **Be a covered surface for a range of sports to be used both inside and outside school hours.**
- **Provide additional changing facilities associated with use of the playing surface.**
- **Provide small and large meeting spaces for community use.**
- **A modern, warm, inviting environment.**

**Please contact us if you have any questions
regarding this proposal
by emailing office@roncalli.school.nz**